



KONICA MINOLTA

AccurioPrint
2100

HIGH QUALITY AND RELIABILITY FOR ENTRY-LEVEL PRODUCTION

RETHINK PRINT PRODUCTION



Giving Shape to Ideas

A NEW WORLD OF ENTRY LEVEL MOCHONROME PRINTING

INTRODUCING THE AccurioPrint 2100 FROM KONICA MINOLTA

The AccurioPrint 2100 delivers real value to any print production environment – with high-speed 100 ppm B&W output, high paper and toner capacity, standard built-in print controller and compact footprint to save space on your production floor. Dedicated to central in-house printing facilities and external print-for-pay services – this device provides sturdy construction, high performance and smart inline finishing options teamed up with advanced technology for enhanced B&W print quality. Be more productive with high-performance color scanning capability with dual scanning ADF in combination with the powerful print engine.

Maximise your investment

We want to make sure that you get the most out of your AccurioPrint 2100 – that's why we have improved set-up times to enhance your production time. Combined with one of our software offerings you can automate your workflows and increase the benefits of your investment

Improve efficiencies

Operators of our production systems can count on simple setup, an ultra-reliable paper path, exceptional productivity and outstanding automated image stability. Our R&D Team has put highest priority to fulfill today's high demands in the printing industry.

A smart engine does it all

The AccurioPrint 2100 is an entry level production machine that you can fully rely on. It offers a variety of inline finishing options to meet your clients' every need in one process.





INNOVATE PRINT

RETHINK TECHNOLOGY

Konica Minolta's own advanced colour processing technology of the second generation is called **S.E.A.D.**, which stands for "Screen-Enhancing Active Digital Process", and combines an array of technical innovations to guarantee truly exceptional colour reproduction at top speed. **S.E.A.D. includes these important capabilities:**

Pioneering technologies

Linkage with common solutions applications such as OpenAPI and IWS to utilize with common applications used in the various printing environments such as accounting, scanning or customized panel functions.

Convenient front-to-back registration adjustment

AccurioPrint 2100's front-to-back adjustment function automatically adjusts image position by using the original platen surface. The front-to-back side position and discrepancies in magnification are easily corrected, vastly improving the efficiency of registration adjustment.

Media Detection Sensor

The optional media sensor IM-101 automatically detects the type, weight, thickness and surface of each substrate, and proposes the appropriate

paper settings from the catalogue, which makes wrong paper settings a thing of the past avoiding misprints and waste.







EXPLICIT PRINT SERVER

RETHINK YOUR USER EXPERIENCE

KONICA MINOLTA'S OWN CONTROLLER TECHNOLOGY

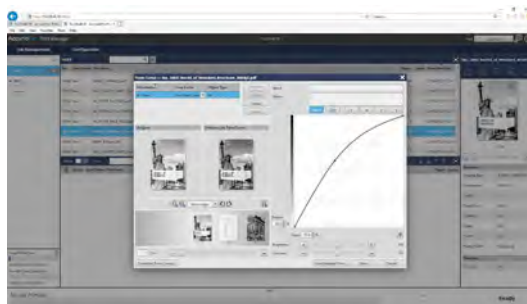
- High-resolution printing is attributed to a real output of 1,200 dpi. Thin lines for tables, graphs and multi-gradient images are vividly reproduced, contributing to the creation of persuasive documents.
- When colour documents are printed, the input image is converted into CIE color space and then into the main unit's color space the main unit processes rich gradients while maintaining high productivity.
- AccurioPro Print Manager is a standard tool that helps you to get the most out of your print production with fast and easy job management. It offers various functions to improve the overall workflow such as job monitoring, editing or hot folder functions



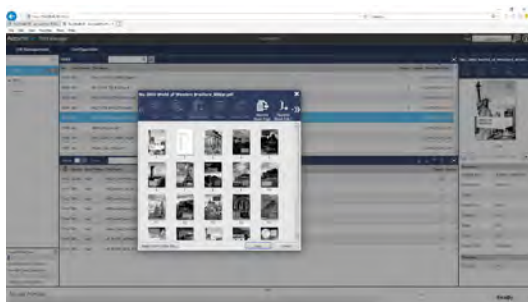
FUNCTIONS AND FEATURES



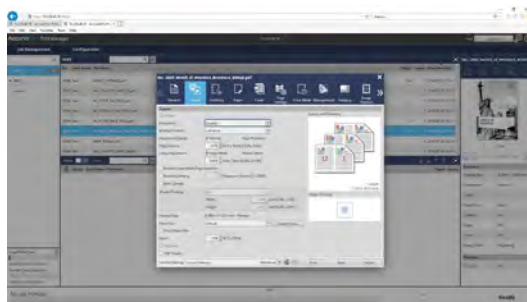
QUEUE MANAGEMENT



TONE CURVE UTILITY



PAGE EDITING



JOB PROPERTIES





STREAMLINE YOUR PRODUCTION

RETHINK YOUR WORKFLOW

Evolving from our expertise in precision technologies and more than 80 years of experience in the printing and imaging industries, AccurioPro reflects our commitment to developing market-shaping technology with functionality that enables your business to grow. AccurioPro, Konica Minolta's suite of digital solutions for professional printing, is one of the industry's most versatile and powerful tools to optimise print production operations and workflows.

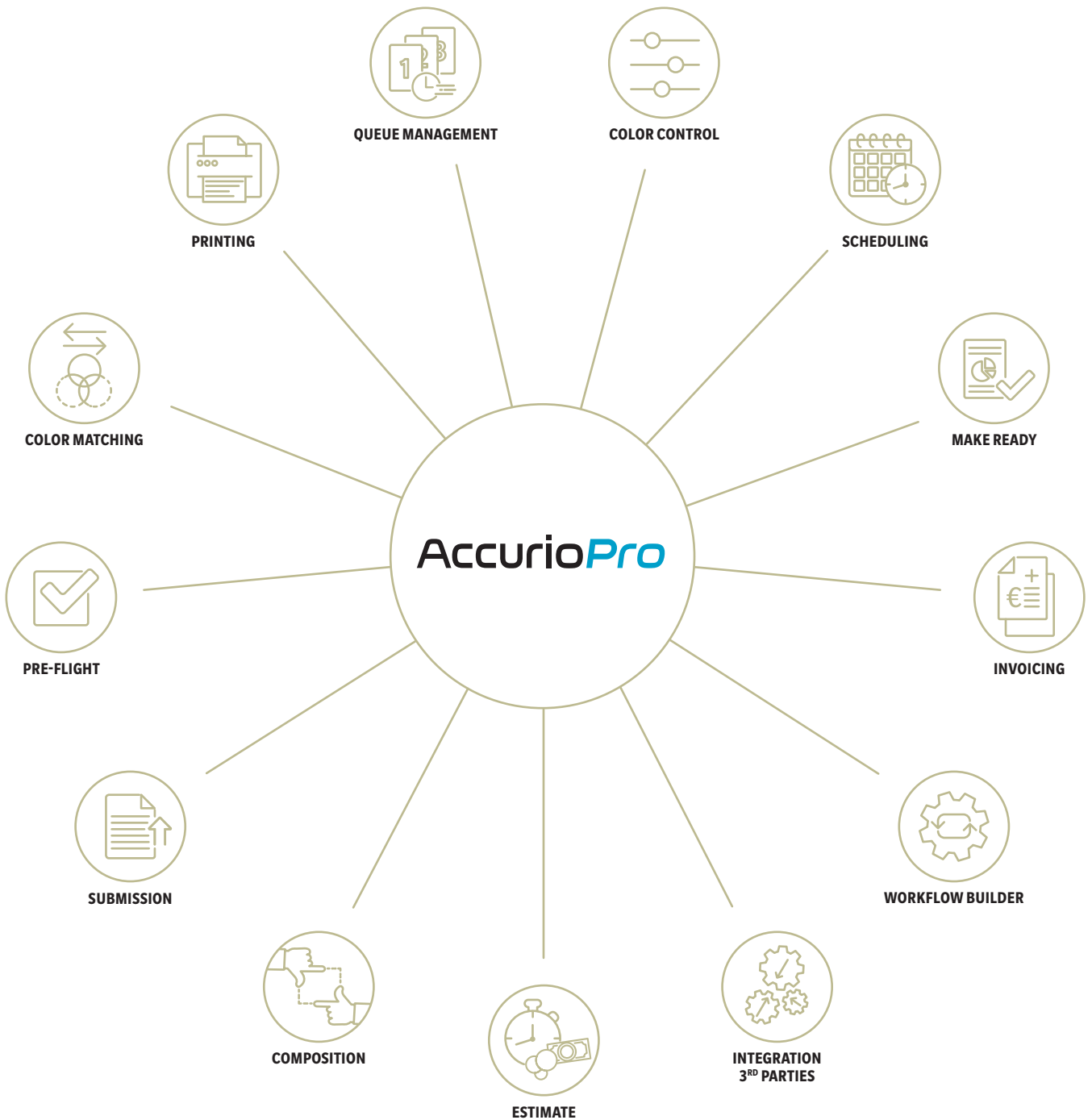
For all printing companies looking to integrate their printing as well as businesses that use digital printing to produce their own in-house publications and promotional materials, AccurioPro boosts speed and

efficiency, expands capabilities and services, and reduces the need for operational manpower – all of which will help improve your profitability!

The comprehensive suite of features that AccurioPro offers includes centralised management, software for automated workflow processing, colour management, seamless integration of different printing technologies and full connectivity of all Konica Minolta printing systems used from input to output.

AccurioPro POSSIBILITIES

RETHINK YOUR WORKFLOW



YOUR ADVANTAGES WITH AccurioPrint 2100

RETHINK PRINT-FOR-PAY

DURABLE PERFORMANCE

- Up to 100 A4 pages per minute
- Up to 56 A3 pages per minute

READY-MADE PRINT PRODUCTS

- Stacking of up to 4,200 sheets
- Two-point and corner Stapling of up to 100 sheets with automatic staple cut mechanism
- Booklet Making up to 80 pages (20 sheets)
- 2- and 4 -hole punching
- Tri-folding up to 3 sheets

GEARED-UP FINISHING

- ZU-608 for z-folding and punching of sheets
- GBC Punch G3 with different die sets for punching, creasing and perforation
- GBC Wire G1 for A4 and A5 wire bound books
- Max MB-200 for A4 ring bound books

ENVIRONMENTAL AWARENESS

- Green procurement policy
- Reduced CO₂ emissions
- Carbon-neutral printing available via our “Enabling Carbon Neutrality” program



ENHANCED SCANNING PERFORMANCE

- The dual scanner scans documents in one path
- Double sheet detector
- Max. 240 ipm (A4, 300 dpi)
- Scanner capacity of 300 sheets

HIGH-END PRINT CONTROL

- Proprietary Konica Minolta controller
- AccurioPro PrintManager for job management optimizes the overall workflow



EASE OF USE

- Simple paper catalogue settings
- Easy-to-follow on-screen instructions

SOPHISTICATED MEDIA HANDLING

- Colour dual scan
- Optional bypass tray
- Up to 9,000-sheet paper input capacity
- Up to 5 paper input trays

PERFECT IMAGE QUALITY

- 1,200 x 1,200 dpi resolution
- Simitri® HD toner technology
- Image density control technology

COMPREHENSIVE MEDIA PROCESSING

- Up to 300 g/m² paper weight in simplex & duplex printing
- Mechanical decurling as standard
- Optional media sensor IM-101 estimates paper weight and type





FINISHING & FUNCTIONS



Letter fold



2/4 hole Punching



Two-point stapling



Corner stapling



Stacking



Booklet



Z-fold

Open stacker
OT-512



Ring binding unit
MB-200 Max Finisher



Staple finisher
FS-532m



Ring binding unit
GBC G1



Multi punching unit
GBC G3



Z-Folding unit
ZU-608



Creasing	Slitting	Perforation	Square-folding	Multi Letter fold-In	Post Insertion	Perfect Binding	Wire-binding	Ring-binding	Multi-punching
								✓	
					✓				
							✓		
✓		✓							✓

✓ standard
✓ optional



10 GOOD REASONS FOR AccurioPrint 2100



1. PERFECT IMAGE QUALITY

with Konica Minolta's own toner and processing technologies.



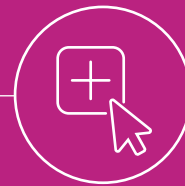
2. SEAMLESS INTEGRATION

into Konica Minolta's application portfolio.



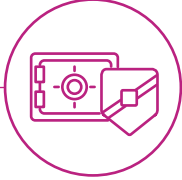
3. ADJUSTABLE CONFIGURATIONS

with numerous configuration options due to individual demands even with a very compact design.



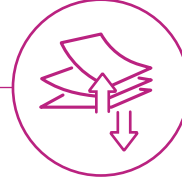
4. ENHANCE YOUR RANGE OF PRINT OFFERINGS

And fulfill today's demands for versatile and creative print products.



5. STURDY DESIGN

supports reliable high volume print production.



6. LONG PRINT RUNS

due to highest paper in- and output capabilities in its class.



7. EASY TO USE GUI

even for novice operators, avoids or at least minimises learning curves.



8. BENEFIT FROM GREAT BUILT-IN TECHNOLOGIES

with advanced screening and registration technologies printing capabilities.



9. HIGH SPEED COLOR SCANNER

for speedy digitization of documents.



10. COMPLIANCE

with global environmental standards.

TAKE LEADERSHIP AND RESPONSIBILITY

RETHINK TOMORROWS BUSINESS

MADE YOUR BUSINESS

Commercial printers

Growing your business and getting the maximum out of your investment is what the AccurioPrint 2100 series promises. The high speed, high productivity and high uptime help you achieve shortest turnaround times. Combined with great media flexibility with stocks of up to 350 g/m², you further enhance the offerings of your print shop. Quality issues are a thing of the past, as these presses offer a wide range of tools to control and adjust themselves.

CRDs

AccurioPrint 2100 support a high degree of automation and yet also ensure high-level quality. Professional inline finishing produces ready-made print products at the click of a finger. Their versatile media flexibility and high productivity make AccurioPrint 2100 a solid and lucrative investment for the future.

DESIGN FOR OUR PLANET

Konica Minolta promotes sustainable development and integrates environmental and social perspectives into its business strategies. You can rely on Konica Minolta products to underpin your green strategy to build your business.

Committed to help prevent global warming, Konica Minolta strives to reduce CO₂ emissions during product manufacture, product distribution, at the sales stage, and during product use – with even stricter targets than demanded by the Kyoto Protocol. Enabling carbon neutrality, Konica Minolta offers its customers the offset of unavoidable CO₂ emissions for production printing. Together with the experts from Climate Partner, Konica Minolta proposes a new and profound eco concept for our professional production presses.







CONTROLLER AND OPTIONS

RETHINK THE NEEDS

KONICA MINOLTA CONTROLLER

Type	Built-in type
Resolution	Print: 1,200 x 1,200 dpi; 600 dpi x 600 dpi Scan: 200 dpi, 300 dpi, 400 dpi, 600 dpi
CPU	Pentium G4400 3.3 GHz
Memory	12 GB (DDR4 U-DIMM x2) 2,133 MHz
HDD	1 TB (SATA/ 7,200 rpm / 3.5 inch)
SSD	4 GB
Interface	Ethernet 10/100/1000BASE-T; SB 3.0 host
Page Description Language	PCL5E/XL (PCL6); Adobe PostScript 3 (PS3020); PDF directprint (PDF Ver.1.7); TIFF (TIFF Ver.6) direct print; PPML (Ver 2.2)





KONICA MINOLTA

TECHNICAL SPECIFICATIONS

RETHINK INNOVATION

SYSTEM SPECIFICATIONS

Resolution	1,200 x 1,200 dpi
Paper weight	40–300 g/m ² (350 g/m ² optional*)
Duplex unit	Non-stack type; 40–300 g/m ²
Paper sizes	Standard: Min.: 182 x 139 mm Max.: 324 x 463 mm Optional: Min.: 95 x 139 mm* Max.: 324 x 483 mm**
Maximum image area	314 x 463 mm (up to 483 mm** optional)
Paper input capacity	Standard: 3,000 sheets Max.: 9,000 sheets
Paper output capacity	Max.: 4,200 sheets
Main unit dimensions (W x D x H)	990 x 910 x 1,460 mm
Main unit weight	340 kg

PRODUCTIVITY

A4 – max. per minute	100 ppm
A3 – max. per minute	56 ppm
SRA3 – max. per minute	53 ppm
A4 – max. per hour	6,000 pph
A3 – max. per hour	3,300 pph
SRA3 – max. per hour	3,120 pph

CONTROLLER

Embedded Konica Minolta controller

SCANNER SPECIFICATIONS

Scan speed A4	Up to 240 opm
Scan resolution	600 x 600 dpi
Scan modes	Scan to HDD; Scan to FTP; Scan to PC; Scan to eMail; Scan to WebDAV; Scan to USB Memory; HDD to FTP/SMB/WebDAV; LDAP supported
Scan formats	TIFF; PDF; PDF(PDF/A); Encrypted PDF; XPS; CompactPDF; JPEG

COPIER SPECIFICATIONS

Gradations	256 gradations
FCOT	Less than 3.4 sec. (A4 LEF)
Magnification	25–400%, in 0.1% steps
Mutiple copies	1–9,999

ACCESSORIES

Large capacity tray A4	LU-414
Large capacity tray SRA3	LU-415
Air assist paper feed unit	PF-709
Stapling unit	FS-532m
Saddle stitch kit for FS-532	SD-510
Punch kit for FS-532	PK-525
Post inserter for FS-532	PI-502
Multi bypass tray	MB-507
Output tray	OT-507
Open stacker	OT-512
Mount kit for 3rd party	MK-737
Wire binding unit	GBC Wire G1
Ring binding unit	Max MB-200
Inline Multi-punch unit	GBC Punch G3
Relay unit	RU-518m
Humidification unit	HM-103

* With PF-709

** With LU-415

– All specifications refer to A4-size paper of 80 g/m² quality.

– The support and availability of the listed specifications and functionalities vary depending on operating systems, applications and network protocols as well as network and system configurations.

– The stated life expectancy of each consumable is based on specific operating conditions such as page coverage for a particular page size (5 % coverage of A4).

– The actual life of each consumable will vary depending on use and other printing variables including page coverage, page size, media type, continuous or intermittent printing, ambient temperature and humidity.

– Some of the product illustrations contain optional accessories.

– Specifications and accessories are based on the information available at the time of printing and are subject to change without notice.

– Konica Minolta does not warrant that any prices or specifications mentioned will be error-free.

– All brand and product names may be registered trademarks or trademarks of their respective holders and are hereby acknowledged.